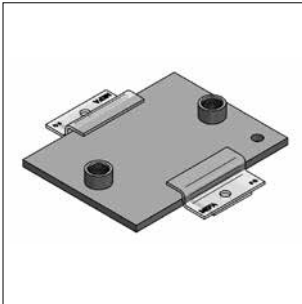
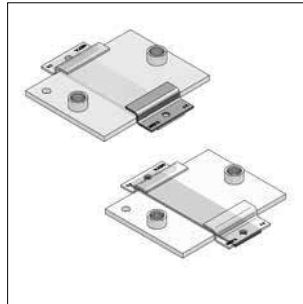


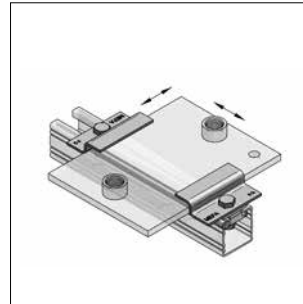
MEFA sliding elements



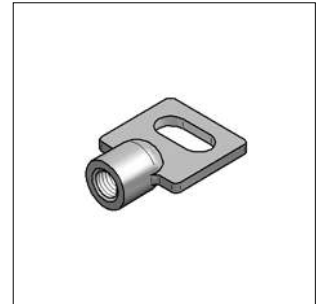
Sliding plates
Page 4/2



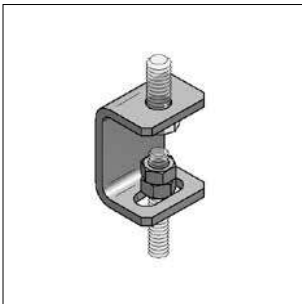
Z-pressure pads, sliding stripes
Page 4/3



Sliding element radial-axial
Page 4/4



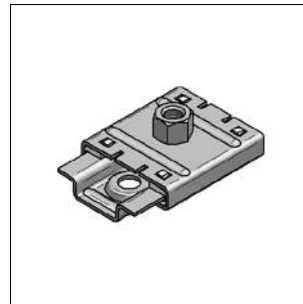
Spline end
Page 4/4



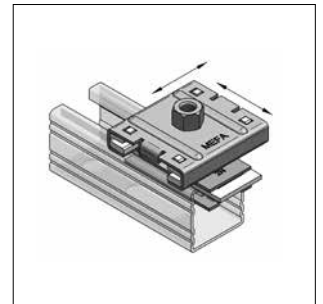
Suspended bracket
Page 4/5



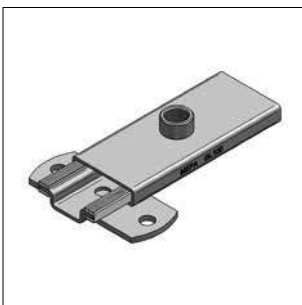
Ceiling hanger TF
Page 4/5



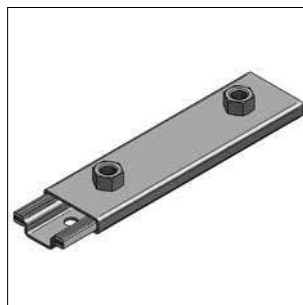
Slider GL 37
Page 4/6



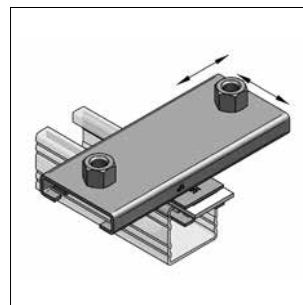
Sliding element radial-axial 37
Page 4/7



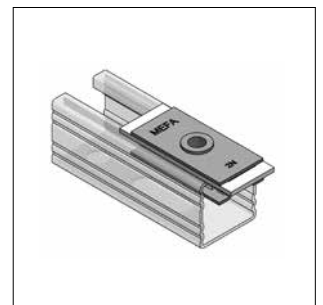
Slider GL 100
Page 4/8



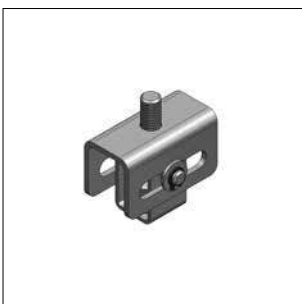
Slider GL 200
Page 4/8



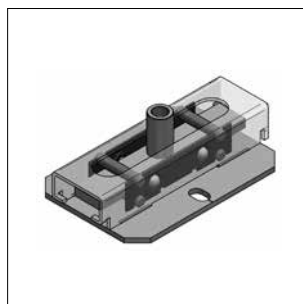
Sliding element radial-axial
Page 4/9



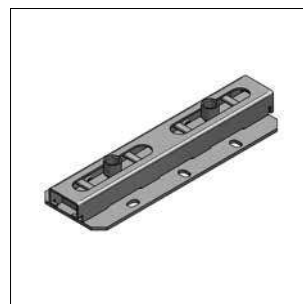
Profile rail slider 45
Page 4/10



Suspended bracket 35 mm
Page 4/11



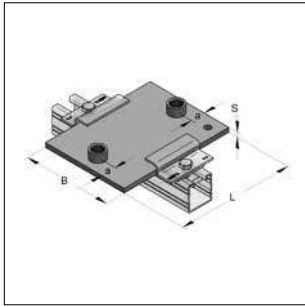
Roller bearing
Page 4/11



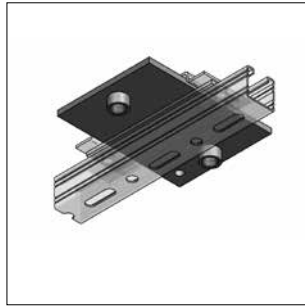
Roller bearing Duo
Page 4/12

sliding elements of stainless steel see chapter 13

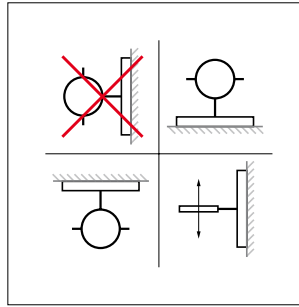
Sliding plates



Sliding plate
standing installation



Sliding plate
hanging installation



Assembly instruction

Specification:

Application area: absorption of axial length expansion
Required accessory: sliding stripe, Z-pressure pad (80 mm, 1-hole)

Technical data:

Material: steel
Material type: S235JR
Surface: galvanized¹⁾

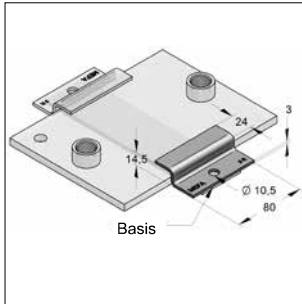
Recommended pipe diameters: L 150 = up to OD 193,0 mm
L 200 = up to OD 299,5 mm
L 250 = up to OD 419,0 mm

¹⁾ Components for outdoor application also available with Zinc-Nickel-coating (corrosion-protection class C3 acc. to ISO 9223). Delivery time on request!

* Delivery times on request

Identification	Dimension L x B x S [mm]	Connection	a [mm]	Sliding distance		max. load [kN]	Accessory sliding stripe [Part-No.]	Weight [kg/pc.]	Packing [pc.]	Part-No. Sliding plate
				standing [mm]	hanging [mm]					
Sliding plate 150 x 100 x 8		1x nut M16	-	100	-	1,5	077955501	1,00	1	0771162
Sliding plate 150 x 100 x 8		1x sleeve 1/2"	-	100	-	1,5	077955501	1,00	1	0771200
Sliding plate 150 x 100 x 8*		1x sleeve 3/4"	-	100	-	1,5	077955501	1,01	1	0771227
Sliding plate 150 x 100 x 8		2x nut M16	25	100	20	4,8	077955501	1,04	1	0771164
Sliding plate 150 x 100 x 8		2x sleeve 1/2"	25	100	20	4,8	077955501	1,03	1	0771202
Sliding plate 150 x 100 x 8*		2x sleeve 3/4"	25	100	20	4,8	077955501	1,05	1	0771229
Sliding plate 200 x 100 x 8		2x nut M16	25	150	70	3,0	077955501	1,36	1	0771163
Sliding plate 200 x 100 x 8		2x sleeve 1/2"	25	150	70	3,0	077955501	1,35	1	0771201
Sliding plate 200 x 100 x 8*		2x sleeve 3/4"	25	150	70	3,0	077955501	1,38	1	0771228
Sliding plate 200 x 100 x 8		2x sleeve 1"	25	150	70	3,0	077955501	1,44	1	0771236
Sliding plate 200 x 150 x 8*		2x sleeve 1/2"	25	150	70	4,4	077956701	1,98	1	0771331
Sliding plate 250 x 100 x 8		2x nut M16	25	200	120	2,2	077955501	1,68	1	0771465
Sliding plate 250 x 100 x 8		2x sleeve 1/2"	25	200	120	2,2	077955501	1,66	1	0771503
Sliding plate 250 x 100 x 8*		2x sleeve 3/4"	25	200	120	2,2	077955501	1,69	1	0771511
Sliding plate 250 x 100 x 8		2x sleeve 1"	25	200	120	2,2	077955501	1,76	1	0771538
Sliding plate 250 x 200 x 8*		2x sleeve 1/2"	25	200	120	4,2	077956001	3,26	1	0771707
Sliding plate 250 x 200 x 10*		2x sleeve 1/2"	25	200	120	6,4	077956001	4,06	1	0771710
Sliding plate 300 x 200 x 10*		2x sleeve 1"	25	200	160	5,6	077956001	4,96	1	0771811
Sliding plate 300 x 200 x 12*		2x sleeve 1"	25	200	160	8,1	077956001	5,91	1	0771814
Sliding plate 300 x 250 x 12*		2x sleeve 1"	25	200	160	10,2	077957001	7,36	1	0771817
Sliding plate 350 x 200 x 12*		2x sleeve 1 ^{1/4} "	35	300	200	6,0	077956001	6,94	1	0771902
Sliding plate 350 x 250 x 12*		2x sleeve 1"	25	300	200	7,4	077957001	8,56	1	0771911
Sliding plate 400 x 250 x 12*		2x sleeve 1 ^{1/4} "	35	350	250	5,4	077957001	9,82	1	0771973

Z-pressure pad



Z-pressure pad with basis

Specification:

Application area: mounting of MEFA sliding plates
 Needed accessory: hexagon screw M10 x 25,
 threaded plate (consistent to profile rail)

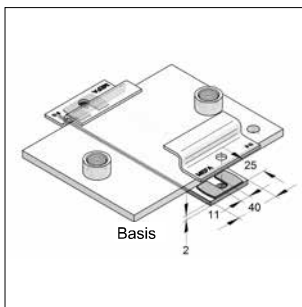
Technical data:

Material: steel
 Material type: S235JR
 Surface: galvanized¹⁾
 Hole OD: 10,5 mm

¹⁾ Components for outdoor application also available with Zinc-Nickel-coating (corrosion-protection class C3 acc. to ISO 9223). Delivery time on request!

Identification	L [mm]	lifting stress/pair [kN]	Number of mounting holes [pc.]	Weight [kg/pc.]	Packing [pc.]	Part-No.
Z-pressure pad	80	4,5	1	0,114	1	077951201

Basis for Z-pressure pad



Z-pressure pad with basis

Specification:

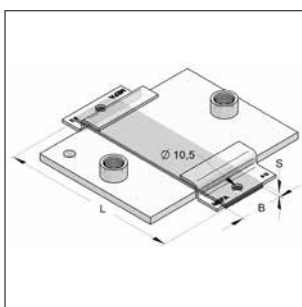
Application area: Increasing of Z-pressure pad

Technical data:

Material: steel
 Surface: pre-galvanized

Identification	thickness [mm]	Weight [kg/pc.]	Packing [pc.]	Part-No.
Basis for Z-pressure pad	2	0,012	1	0779508

Sliding stripe PA 6



Sliding stripe

Specification:

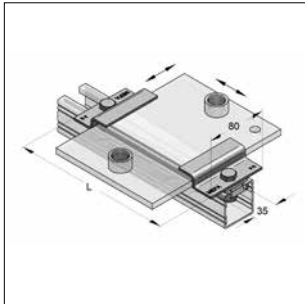
Product attributes: improvement of
 sliding characteristic
 Application area: sliding plates

Technical data:

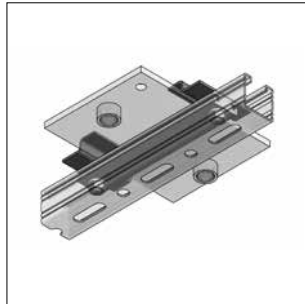
Material: polyamide 6
 Static friction factor: 0,2 - 0,3
 Sliding: 0,15 - 0,25
 Thermal load: - 30 °C up to + 110 °C
 Hole OD: 10,5 mm

Identification	Type	Dimension L x B x S [mm]	Hole distance [mm]	Weight [kg/pc.]	Packing [pc.]	Part-No.
Sliding stripe	standard	1000 x 50 x 5	unperforated	0,288	1	0779550
Sliding stripe	for sliding plates 100 mm wide	163 x 50 x 5	138	0,046	1	077955501
Sliding stripe	for sliding plates 150 mm wide	213 x 50 x 5	188	0,061	1	077956701
Sliding stripe	for sliding plates 200 mm wide	263 x 50 x 5	238	0,075	1	077956001
Sliding stripe	for sliding plates 250 mm wide	313 x 50 x 5	288	0,089	1	077957001

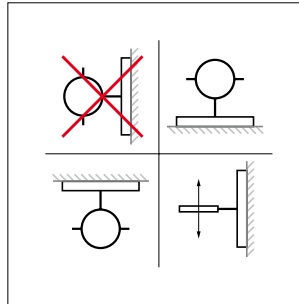
Sliding element radial-axial



Sliding element radial-axial
with sliding plate
(standing installation)



Sliding element radial-axial
with sliding plate
(hanging installation)



Assembly instruction

Specification:

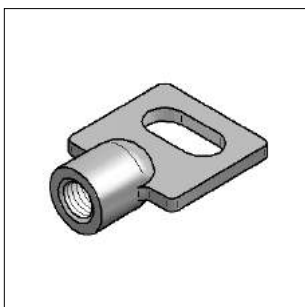
Profile rail type:	C-profile 45 mm
Application area:	- absorption of radial and axial length expansion - for standing, hanging and vertical installed pipes - not suitable for lateral passed pipes

Technical data:

Material sliding element:	steel
Material type sliding element:	S235JR
Surface sliding element:	galvanized
Material sliding stripe:	polyamide 6
Static friction factor:	0,2 - 0,3
Sliding friction factor:	0,15 - 0,25
Thermal load:	-30 °C up to + 110 °C

Identification	Size	Type	L [mm]	Weight [kg/pc.]	Packing [pc.]	Part-No.
Sliding element radial-axial I		for sliding plates 100 mm wide	163	0,391	1	0779971
Sliding element radial-axial II		for sliding plates 150 mm wide	213	0,415	1	0779972
Sliding element radial-axial III		for sliding plates 200 mm wide	263	0,440	1	0779973

Spline end



Spline end

Specification:

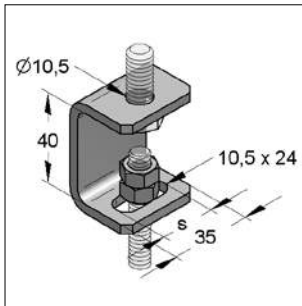
Application area:	absorption of axial length expansion of simple suspensions
-------------------	--

Technical data:

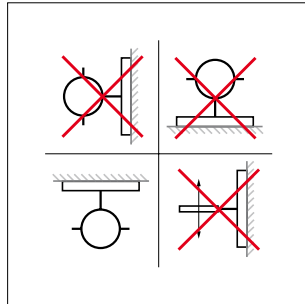
Material:	malleable cast iron
Surface:	galvanized

Identification	Thread	Dimension elongated hole [mm]	max. load [kN]	Material thickness lug [mm]	Weight [kg/pc.]	Packing [pcs.]	Part-No.
Spline end	M10	25 x 11,5	3,5	4,0	0,068	50	0600011
Spline end	M12	22 x 10,5	4,7	5,0	0,074	50	0610046

■ Suspended bracket type L



Suspended bracket type L



Assembly instruction

Specification:

Application area: for single fixation with threaded rod under ceiling
Scope of delivery: suspended bracket, cone- and counter nut

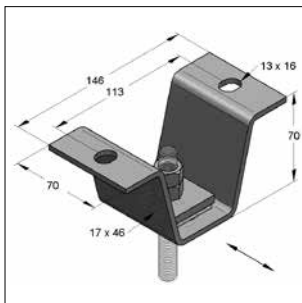
Technical data:

Material: steel
Material type: S235JR
Surface: galvanized

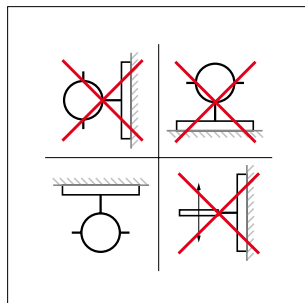
Identification	Thread	Adjustable height [mm]	Sliding distance s [mm]	max. load [kN]	Weight [kg/pc.]	Packing [pcs.]	Part-No.
Suspended bracket type L	M8	30	16	1,6	0,104	100	0781010
Suspended bracket type L	M10	30	14	1,6	0,119	100	0781029

04

■ Ceiling hanger TF



Ceiling hanger TF



Assembly instruction

Specification:

Application area: ceiling- and rail suspension
Scope of delivery: sliding plate, perforated plate and two nuts

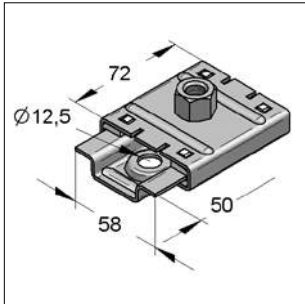
Technical data:

Material ceiling hanger: steel
Material type ceiling hanger: S235JR
Surface ceiling hanger: galvanized

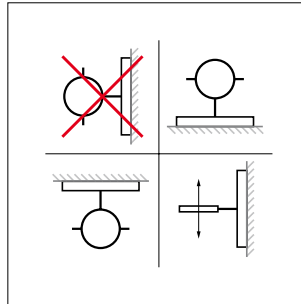
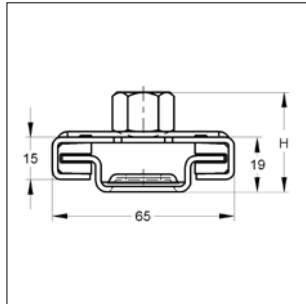
Material sliding stripe: polyamide 6
Static friction factor: 0,2 - 0,3
Sliding friction factor: 0,15 - 0,25
Thermal load: -30 °C up to + 110 °C

Identification	Thread	max. sliding piece [mm]	max. load [kN]	Weight [kg/pc.]	Packing [pc.]	Part-No.
Ceiling hanger TF	M10	36	12,0	0,619	1	0816604
Ceiling hanger TF	M12	34	12,0	0,630	1	0816612
Ceiling hanger TF	M16	30	12,0	0,670	1	0816639

Slider GL 37



Slider GL 37



Assembly instruction

Specification:

Application area: absorption of axial length expansion of max. 37 mm at standing, hanging or vertical passed pipes

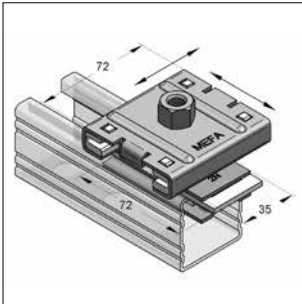
Remark: after mounting protection lugs should be turned up, thereby slipping can be avoided

Technical data:

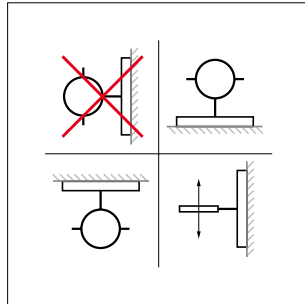
Material slider: steel
 Material type slider: S235JR
 Surface slider: galvanized
 Sliding distance slider: up to 37 mm
 Material sliding plate: polyamide 6
 Static friction factor: 0,2 - 0,3
 Sliding friction factor: 0,15 - 0,25
 Thermal load: -30 °C up to + 110 °C

Identification	Connection	H [mm]	max. loading		Weight [kg/pc.]	Packing [pcs.]	Part-No.
			hanging [kN]	standing [kN]			
Slider GL 37	1 x M8	32	1,3	1,3	0,204	25	0770515
Slider GL 37	1 x M10	34	1,3	1,3	0,214	25	0770523
Slider GL 37	1 x M12	36	1,3	1,3	0,223	25	0770531
Slider GL 37	1 x M16	34	1,3	1,3	0,232	25	0770558
Slider GL 37	1 x 1/2"	35	1,3	1,3	0,225	25	0770604

■ Sliding element radial-axial GL 37



Sliding element radial-axial GL 37



Assembly instruction

Specification:

For profile rail type: C-profile 45 mm
 Application area: absorption of radial and axial length expansion for standing, hanging or vertical passed pipes

Constitution: slider GL 37 and profile rail slider;
 pre-assembled (without C-profile)

Remark: after mounting protection lugs should be turned up, thereby slipping can be avoided

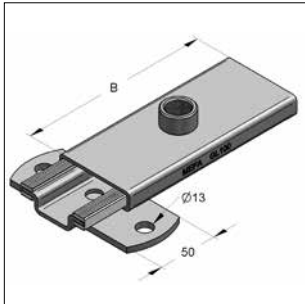
Technical data:

Material: steel
 Material type: S235JR
 Surface: galvanized
 Sliding distance axial: up to 37 mm
 Sliding distance radial: max. rail length

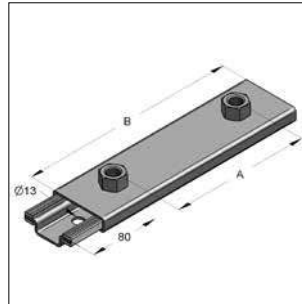
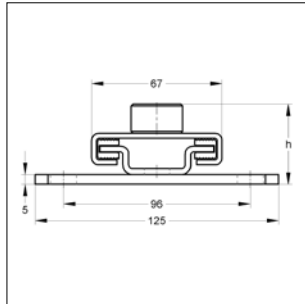
Material sliding plate: polyamide 6
 Static friction factor: 0,2 - 0,3
 Sliding friction factor: 0,15 - 0,25
 Thermal load: -30 °C up to + 110 °C

Identification	max. loading		Weight [kg/pc.]	Packing [pc.]	Part-No.
	hanging [kN]	standing [kN]			
Sliding element radial-axial GL 37 M8	1,3	1,3	0,357	1	077046801
Sliding element radial-axial GL 37 M10	1,3	1,3	0,367	1	077046001
Sliding element radial-axial GL 37 M12	1,3	1,3	0,376	1	077046201
Sliding element radial-axial GL 37 M16	1,3	1,3	0,385	1	077046601
Sliding element radial-axial GL 37 sleeve 1/2"	1,3	1,3	0,378	1	077046401

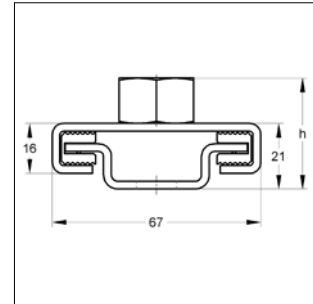
Slider GL 100 and GL 200



Slider GL 100
(Illustration with lug)



Slider GL 200



Specification:

For profile rail type: C-profile 45 mm
Application area: absorption of axial length expansion for standing, hanging or vertical passed pipes

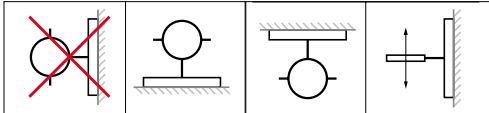
Technical data:

Material slider: steel
Material type slider: S235JR
Surface slider: galvanized¹⁾

Remark: after mounting protection lugs should be turned up, thereby slipping can be avoided

Sliding distance GL 100 approx. 75 mm
Sliding distance GL 200 approx. 165 mm

Assembly instruction:

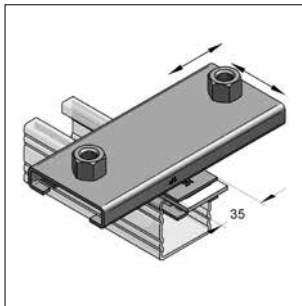


Material sliding plate: polyamide 6
Static friction factor: 0,2 - 0,3
Sliding friction factor: 0,15 - 0,25
Thermal load: -30 °C up to + 110 °C

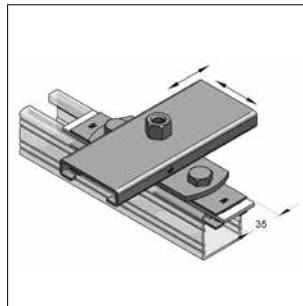
¹⁾ Components for outdoor application also available with Zinc-Nickel-coating (corrosion-protection class C3 acc. to ISO 9223). Delivery time on request!

Identification	Connection	A	H	B	max. load	Weight	Packing	Part-No.
Slider GL 100	1x nut M10	-	35	160	3,0	0,517	1	0770524
	1x nut M12	-	37	160	3,0	0,526	1	0770532
	1x nut M16	-	36	160	3,0	0,535	1	0770559
	1x sleeve 1/2"	-	36	160	3,0	0,528	1	0770605
Slider GL 100 with lug	1x nut M10	-	40	160	3,0	0,748	1	0770528
	1x nut M12	-	42	160	3,0	0,757	1	0770536
	1x nut M16	-	41	160	3,0	0,766	1	0770563
	1x sleeve 1/2"	-	41	160	3,0	0,759	1	0770609
Slider GL 100	2x nut M10	120	35	160	3,0	0,538	1	0770526
	2x nut M12	120	37	160	3,0	0,562	1	0770534
	2x nut M16	120	36	160	3,0	0,581	1	0770561
	2x sleeve 1/2"	120	36	160	3,0	0,559	1	0770607
Slider GL 100 with lug	2x nut M10	120	40	160	3,0	0,769	1	0770530
	2x nut M12	120	42	160	3,0	0,793	1	0770538
	2x nut M16	120	41	160	3,0	0,812	1	0770565
	2x sleeve 1/2"	120	41	160	3,0	0,790	1	0770611
Slider GL 200	2x nut M10	150	35	250	3,0	0,746	1	0770527
	2x nut M12	150	37	250	3,0	0,763	1	0770535
	2x nut M16	160	36	250	3,0	0,781	1	0770562
	2x sleeve 1/2"	160	36	250	3,0	0,767	1	0770608
Slider GL 200 with lug	2x nut M10	150	40	250	3,0	0,977	1	0770638
	2x nut M12	150	42	250	3,0	0,994	1	0770539
	2x nut M16	160	41	250	3,0	1,012	1	0770566
	2x sleeve 1/2"	160	41	250	3,0	0,998	1	0770615

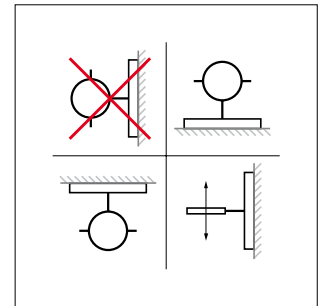
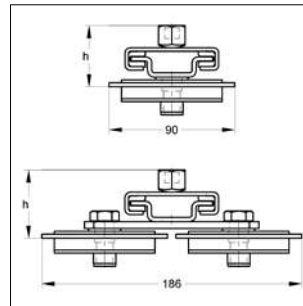
■ Sliding element radial-axial GL 100 and GL 200



Sliding element radial-axial
without lug



Sliding element radial-axial
with lug



Assembly instruction

Specification:

For profile rail type: C-profile 45 mm
Application area: absorption of radial and axial length expansion for standing, hanging or vertical passed pipes

Technical data:

Material: steel
Material type: S235JR
Surface: galvanized

Constitution: slider GL 100 or GL 200 and radial-axial sliding element, pre-assembled (without C-profile)

Sliding distance GL 100: approx. 75 mm
Sliding distance GL 200: approx. 165 mm

Notice: after mounting protection lugs should be turned up, thereby slipping can be avoided

Material sliding plate: polyamide 6
Static friction factor: 0,2 - 0,3
Sliding friction factor: 0,15 - 0,25
Thermal load: -30 °C up to + 110 °C

Identification	Connection		h	max. load	Weight	Packing	Part-No.
Sliding element radial-axial GL 100	1x nut	M10	42	2,0	0,670	1	077048401
	1x nut	M12	44	2,0	0,679	1	077048301
	1x nut	M16	43	2,0	0,688	1	077048501
	1x sleeve 1/2"		43	2,0	0,700	1	077048601
Sliding element radial-axial GL 100 with lug	1x nut	M10	47	3,0	1,074	1	077048402
	1x nut	M12	49	3,0	1,083	1	077048302
	1x nut	M16	48	3,0	1,092	1	077048502
	1x sleeve 1/2"		48	3,0	1,080	1	077048602
Sliding element radial-axial GL 100	2x nut	M10	42	2,0	0,691	1	077048001
	2x nut	M12	44	2,0	0,715	1	077048101
	2x nut	M16	43	2,0	0,734	1	077048701
	2x sleeve 1/2"		43	2,0	0,712	1	077048201
Sliding element radial-axial GL 100 with lug	2x nut	M10	47	3,0	1,095	1	077048002
	2x nut	M12	49	3,0	1,119	1	077048102
	2x nut	M16	48	3,0	1,138	1	077048702
	2x sleeve 1/2"		48	3,0	1,116	1	077048202
Sliding element radial-axial GL 200	2x nut	M10	42	2,0	0,899	1	077047101
	2x nut	M12	44	2,0	0,916	1	077047001
	2x nut	M16	43	2,0	0,949	1	077047201
	2x sleeve 1/2"		43	2,0	0,920	1	077047301
Sliding element radial-axial GL 200 with lug	2x nut	M10	47	3,0	1,303	1	077047102
	2x nut	M12	49	3,0	1,320	1	077047002
	2x nut	M16	48	3,0	1,321	1	077047202
	2x sleeve 1/2"		48	3,0	1,324	1	077047302

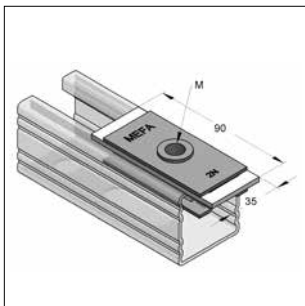
Recommended values for slider GL-insert

The quoted data is valid for standing and hanging mounting and point out limit values for the system function of the mounting combination.

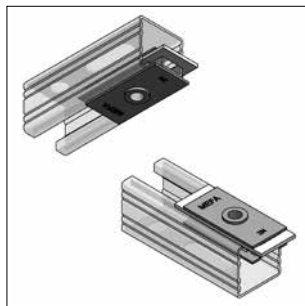
Slider	Pipe clamps	max. recommended length threaded pin/ pipe nipple [mm]
GL 37 M8	Omnia MB	50
GL 37 M10	Omnia MB	70
GL 37 M12	Omnia MB	90
GL 37 M16	Omnia MB	110
GL 37 1/2"	Maxima PSM	150
GL 100 1 x M10	Omnia MB	90
GL 100 1 x M12	Omnia MB	110
GL 100 2 x M10	Omnia MB	90
GL 100 2 x M12	Omnia MB	110
GL 100 2 x M12	Maxima PSM	110
GL 100 2 x M16	Maxima PSM	160
GL 100 2 x 1/2"	Maxima PSM	200
GL 200 2 x M10	Omnia MB	90
GL 200 2 x M12	Omnia MB	110
GL 200 2 x M12	Maxima PSM	110
GL 200 2 x M16	Maxima PSM	160
GL 200 2 x 1/2"	Maxima PSM	200

04

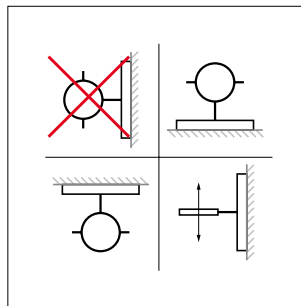
Profile rail slider 45



Profile rail slider 45



Assembly instruction



Assembly instruction

Specification:

For profile rail type: C-profile 45 mm

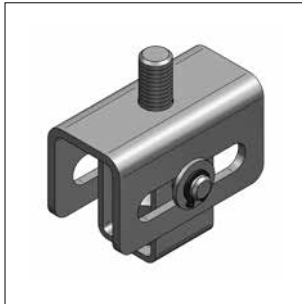
Application area: absorption of axial length expansion of pipes.
For standing, hanging or vertical passed pipes.
Release of lateral shear force.

Technical data:

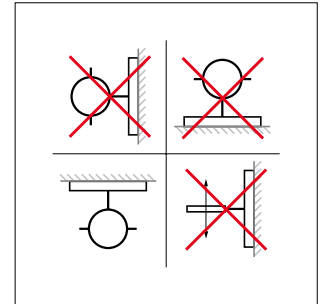
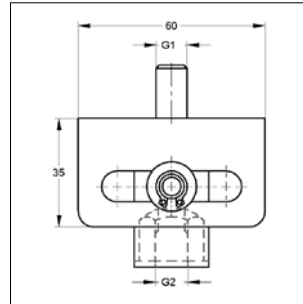
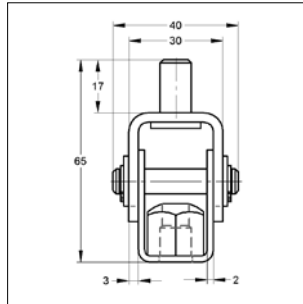
Material: steel
Material type: S235JR
Surface: galvanized
Material sliding plate: polyamide 6
Static friction factor: 0,2 - 0,3
Sliding friction factor: 0,15 - 0,25
Thermal load: -30 °C up to + 110 °C

Identification	max. recom. distances sliding body - pipe clamp [mm]	max. load		Weight [kg/pc.]	Packing [pc.]	Part-No.
		hanging [kN]	standing [kN]			
Profile rail slider 45 M8	45	2,0	2,0	0,115	1	077002801
Profile rail slider 45 M10	55	2,0	2,0	0,120	1	077003001
Profile rail slider 45 M12	55	2,0	2,0	0,126	1	077003201

■ Suspended bracket 35 mm, hanging



Suspended bracket 35 mm
hanging



Assembly instruction

Specification:

Application area: absorption of axial expansion for hanging assembly
Remark: at adjustment do not overwind the slider
Suggestion: to adjust and fix with lock nut

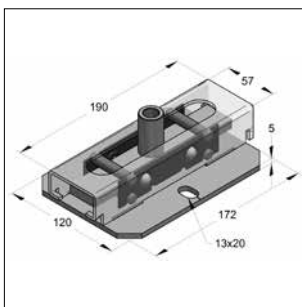
Technical data:

Material: steel
Material type: S235JR
Surface: galvanized

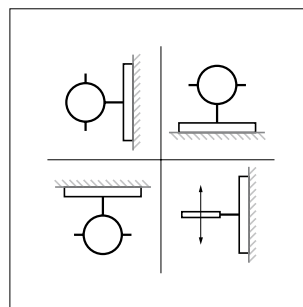
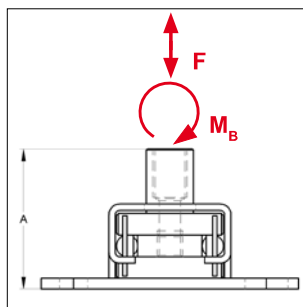
Identification	G1	G2	Sliding distance s [mm]	max. load [kN]	Weight [kg/pc.]	Packing [pcs.]	Part-No.
Suspended bracket 35 mm M10	M10	M8/M10	35	1,5	0,199	50	07709902

04

■ Roller bearing



Roller bearing



Assembly instruction

Specification:

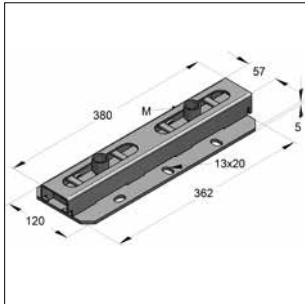
Application area: absorption of axial length expansion for standing, hanging, horizontal or vertical passed pipes

Technical data:

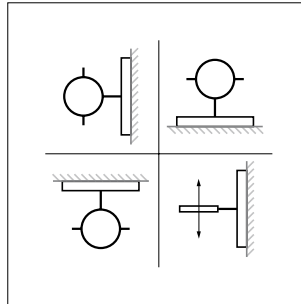
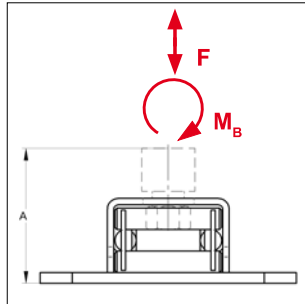
Material: steel
Material type: S235JR
Surface: galvanized
Rolling resistance: 0,004 - 0,02
Sliding distance: 120 mm
max. temperature: up to + 300 °C

Identification	A [mm]	max. load tensile and pressure load F [kN]	max. load bending moments M_B [Nm]	Weight [kg/pc.]	Packing [pc.]	Part-No.
Roller bearing thread M10	65	4,0	150	1,93	1	175811811
Roller bearing thread M12	65	4,0	150	1,92	1	175811813
Roller bearing thread M16	65	4,0	150	1,97	1	175811816
Roller bearing sleeve 1/2"	45	4,0	150	1,92	1	175811839
Roller bearing sleeve 3/4"	86	4,0	150	2,10	1	175811840

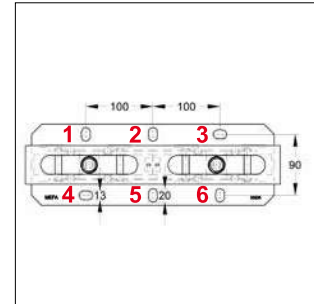
Roller bearing Duo



Roller bearing Duo



Assembly instruction



Mounting points

Specification:

Application area: absorption of axial length expansion for standing, hanging, horizontal or vertical passed pipes.

Remark: for pipe clamp size up to DN 500 may get off coupling plate, so that slide can be pushed apart. After fixing pipe clamp mount coupling plate again on both slides.

Technical data:

Material: steel
 Material type: S235
 Surface: galvanized
 Rolling resistance: 0,004 - 0,02
 Sliding distance: 120 mm
 max. temperature: up to +300°C

Identification	Connection	A [mm]	max. load tensile and pressure load F^* [kN]		max. load bending moments M_B [Nm]	Weight [kg/pc.]	Packing [pc.]	Part-No.
Roller bearing Duo M10	2 x M10	65	4,0	8,0	300	4,05	1	175911811
Roller bearing Duo M12	2 x M12	65	4,0	8,0	300	4,03	1	175911813
Roller bearing Duo M16	2 x M16	65	4,0	8,0	300	4,13	1	175911816
Roller bearing Duo 1/2"	2 x 1/2"	45	4,0	8,0	300	4,03	1	175911839
Roller bearing Duo 3/4"	2 x 3/4"	86	4,0	8,0	300	4,38	1	175911840

* 4 kN with two screw connections at positions 2 and 5.
 8kN with tree screw connections at positions 1, 3 and 5 or positions 2, 4 and 6.
 8kNwith four screw connections at positions 1, 3, 4 and 6.